

Recorded by Christina Aguilera

# Candyman

## Trumpet 1

Music & Lyrics: Christina Aguilera, Linda Perry

Arr.: Mario Haltinner

Boogie Shuffle ♩ = 176

Sing

2

Tar-zan and Jane were swin - gin on a vine Sip-pin' from a bot-tle of vod - ka dou-ble wine

Detailed description: This block contains the first six measures of the trumpet part. It is written in treble clef with a key signature of one sharp (F#) and a 4/4 time signature. The tempo is marked as Boogie Shuffle with a quarter note equal to 176. The melody starts with a quarter note G4, followed by eighth notes A4, B4, C5, D5, E5, F#5, G5, A5, B5, C6, D6, E6, F#6, G6, A6, B6, C7. The lyrics are 'Tar-zan and Jane were swin - gin on a vine' for the first six measures. A '2' above the staff indicates a second ending starting at measure 7.

7

whisper

Sweet sug-ar can dy man

Play

*mf*

Detailed description: This block contains measures 7-11. Measure 7 starts with a 'whisper' instruction. The melody consists of quarter notes G4, A4, B4, C5, D5, E5, F#5, G5, A5, B5, C6, D6, E6, F#6, G6, A6, B6, C7. The lyrics are 'Sweet sug-ar can dy man'. A 'Play' instruction is above measure 8. The dynamic is marked as *mf*.

12

**A**

Detailed description: This block contains measures 12-16. Measure 12 starts with a boxed 'A' indicating the start of a first ending. The melody continues with quarter notes G4, A4, B4, C5, D5, E5, F#5, G5, A5, B5, C6, D6, E6, F#6, G6, A6, B6, C7. The dynamic is *mf*.

17

Detailed description: This block contains measures 17-21. The melody continues with quarter notes G4, A4, B4, C5, D5, E5, F#5, G5, A5, B5, C6, D6, E6, F#6, G6, A6, B6, C7. The dynamic is *mf*.

22

1.

Detailed description: This block contains measures 22-26. Measure 22 starts with a boxed '1.' indicating the first ending. The melody continues with quarter notes G4, A4, B4, C5, D5, E5, F#5, G5, A5, B5, C6, D6, E6, F#6, G6, A6, B6, C7. The dynamic is *mf*.

27

2.

Detailed description: This block contains measures 27-31. Measure 27 starts with a boxed '2.' indicating the second ending. The melody continues with quarter notes G4, A4, B4, C5, D5, E5, F#5, G5, A5, B5, C6, D6, E6, F#6, G6, A6, B6, C7. The dynamic is *mf*.

32

**B**

4

**C**

*f*

Detailed description: This block contains measures 32-39. Measure 32 starts with a boxed 'B' and a '4' above the staff. Measure 33 starts with a boxed 'C'. The melody consists of quarter notes G4, A4, B4, C5, D5, E5, F#5, G5, A5, B5, C6, D6, E6, F#6, G6, A6, B6, C7. The dynamic is marked as *f*.

40

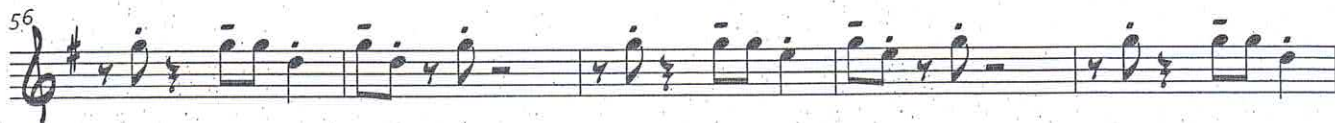
2

*mf*

Detailed description: This block contains measures 40-45. Measure 40 starts with a wavy line above the staff. The melody continues with quarter notes G4, A4, B4, C5, D5, E5, F#5, G5, A5, B5, C6, D6, E6, F#6, G6, A6, B6, C7. A '2' above the staff indicates a second ending starting at measure 41. The dynamic is marked as *mf*.

46

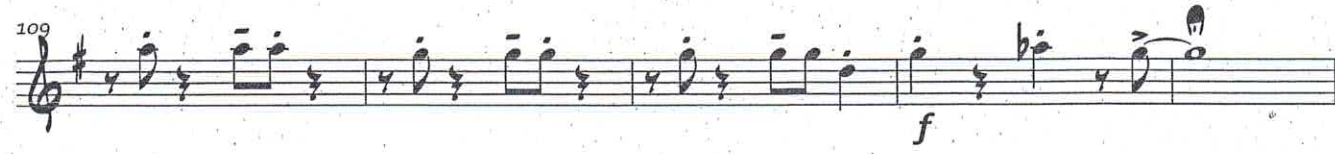
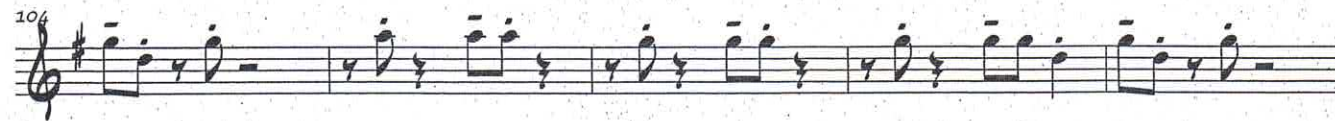
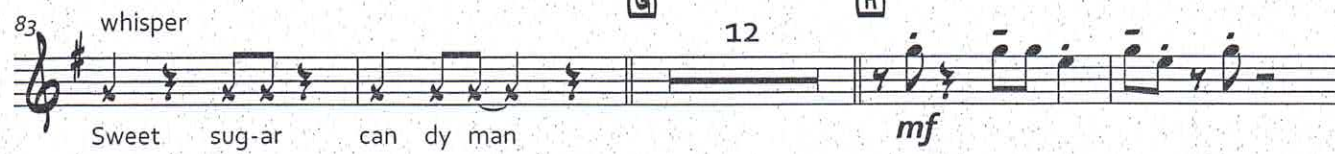
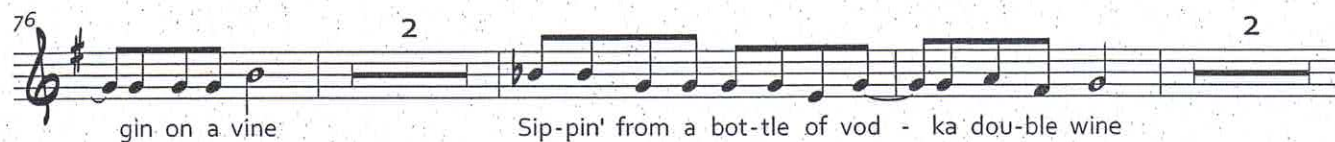
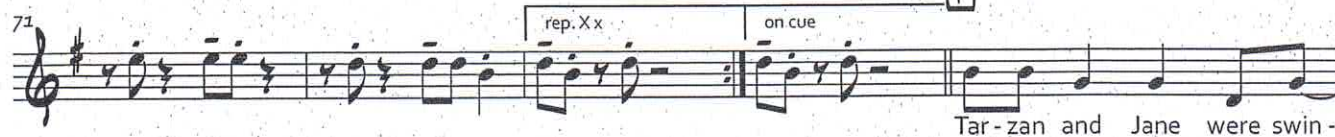
Detailed description: This block contains measures 46-50. The melody continues with quarter notes G4, A4, B4, C5, D5, E5, F#5, G5, A5, B5, C6, D6, E6, F#6, G6, A6, B6, C7. The dynamic is *mf*.



Backgrounds on cue



Sing





Recorded by Christina Aguilera

# Candyman

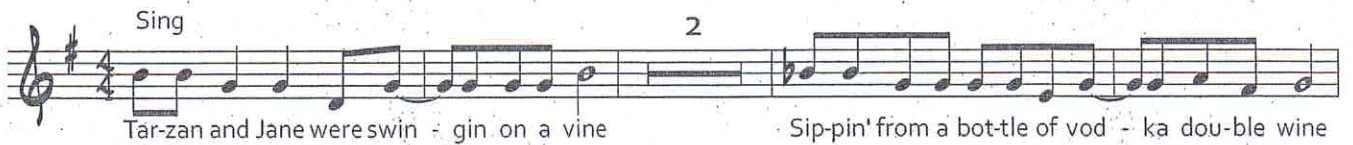
Trumpet 2

Music & Lyrics: Christina Aguilera, Linda Perry

Arr.: Mario Haltinner

Boogie Shuffle ♩ = 176

Sing



Tar-zan and Jane were swin - gin on a vine Sip-pin' from a bot-tle of vod - ka dou-ble wine

7

whisper



Sweet sug-ar can dy man

Play

*mf*

12

(A)



17



22



27



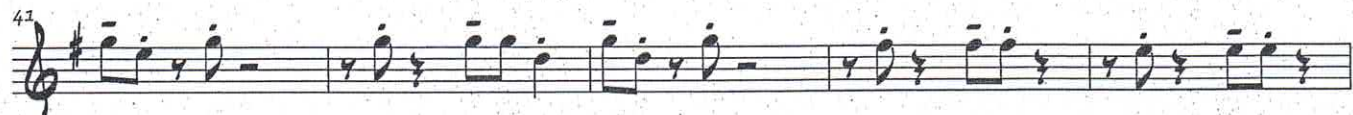
32

(B)


(C)



41



46



© Careers BMG Music Publishing, Famous Music Group, Stuck In The Throat, XTINA Music  
Used by permission of Music sales LTD.

Bernd Classen Music-Edition | D-53894 Mechernich | www.classen-music.de



51

56

**E** Backgrounds on cue

61

66

C7 G7 D7

71

C7 G7 rep. Xx on cue **F** Sing

Tar-zan and Jane were swin-

76

2 2

gin on a vine Sip-pin' from a bot-tle of vod - ka dou-ble wine

83

whisper

Sweet sug-ar can dy man

**G** 12 **H** *mf*

99

104

109

*f*



Recorded by Christina Aguilera

# Candyman

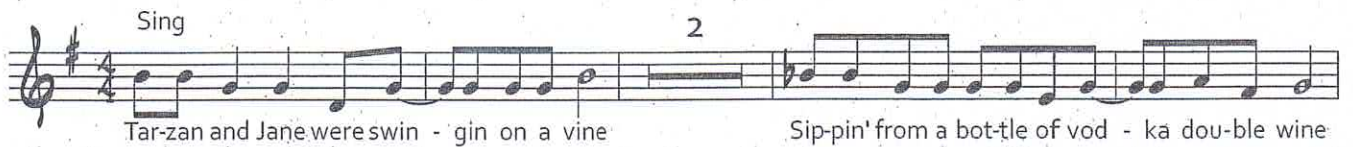
## Trumpet 3

Music & Lyrics: Christina Aguilera, Linda Perry

Arr.: Mario Haltinner

Boogie Shuffle ♩ = 176

Sing



Tar-zan and Jane were swin - gin on a vine Sip-pin' from a bot-tle of vod - ka dou-ble wine

7 whisper Play



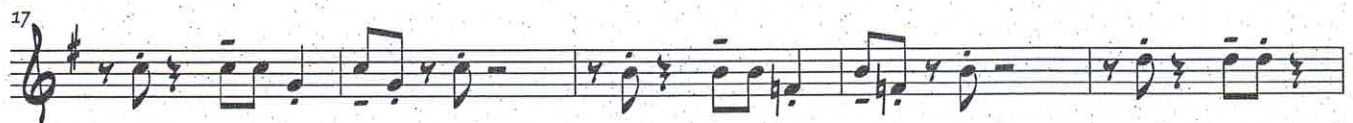
Sweet sug-ar can dy man *mf*

12 **A**



Sweet sug-ar can dy man

17



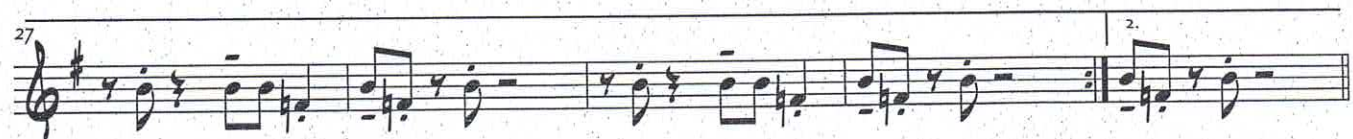
Sweet sug-ar can dy man

22 1.



Sweet sug-ar can dy man

27 2.



Sweet sug-ar can dy man

32 **B** **C** 4 2 *mf*




Sweet sug-ar can dy man *mf*

41



Sweet sug-ar can dy man

46



Sweet sug-ar can dy man

Candyman | Trumpet 3 | 3. 2

D

51 Musical staff with notes and rests.

56 Musical staff with notes and rests.

E

Backgrounds on cue

61 Musical staff with notes and rests.

66 Musical staff with notes and rests.

F

Sing

71 Musical staff with notes and rests. Includes markings 'rep. Xx' and 'on cue'. Lyrics: Tar-zan and Jane were swin-

76 Musical staff with notes and rests. Includes markings '2' above the staff. Lyrics: gin on a vine Sip-pin' from a bot-tle of vod - ka dou-ble wine

G

H

83 Musical staff with notes and rests. Includes marking '12' above the staff. Lyrics: Sweet sug-ar can dy man. Dynamic marking: mf

99 Musical staff with notes and rests.

104 Musical staff with notes and rests.

109 Musical staff with notes and rests. Dynamic marking: f



Recorded by Christina Aguilera  
**Candyman**

Trumpet 4

Music & Lyrics: Christina Aguilera, Linda Perry

Arr.: Mario Haltinner

Boogie Shuffle ♩ = 176

Sing

2

Tar-zan and Jane were swin - gin on a vine Sip-pin' from a bot-tle of vod - ka dou-ble wine

7

whisper

Sweet sug-ar can dy man *mf* Play

12

(A)

17

22

27

32

(B) (C)

*mf*

41

46

