

# THINK

BY ARETHA FRANKLIN & TED WHITE

ARR.: STEWART BURGESS

1ST ALTO

$\text{♩} = 120$

**A**

4

5

*mf*

9

**B**

4

13

4

*sfz* < **SEMPRE**

21

25

**C**

**D**  $\text{F}^{(7)}$

29

31

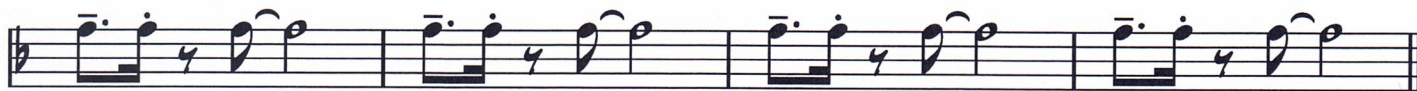
**E**

7

39

"THINK" - 1ST ALTO - 2

43



47 **F**



51



59



69



73



81



# THINK

BY ARETHA FRANKLIN & TED WHITE

ARR.: STEWART BURGESS

2ND ALTO

$\text{♩} = 120$

**A** 4

5

*mf*

9

**B** 4 13 4

*sf* < **SEMPRE**

21

25

**C**

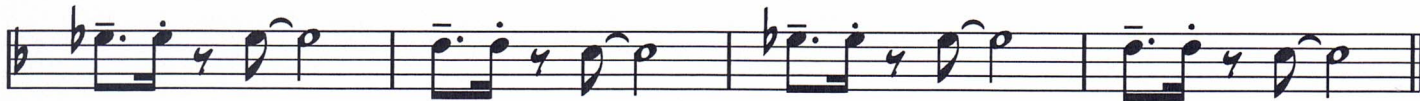
29

**D** 2 31 **E** 8

39

"THINK" - 2ND ALTO - 2

43



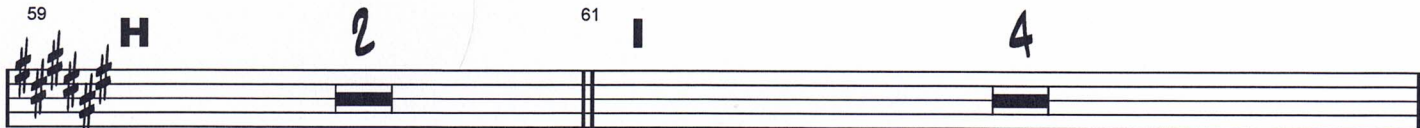
47 **F**



51



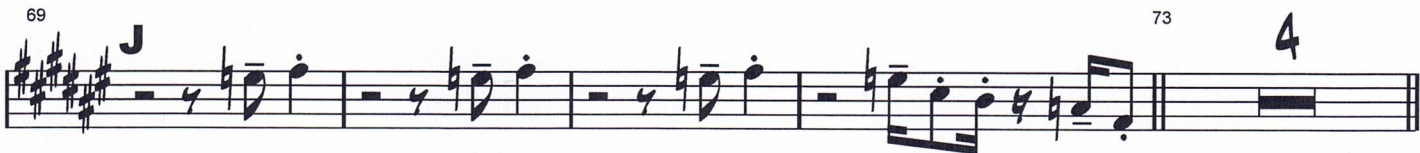
59



69



73



77



81



# THINK

BY ARETHA FRANKLIN & TED WHITE

ARR.: STEWART BURGESS

1ST TENOR

1  $\text{♩} = 120$  **A** 4

5

9 **B** 4 13 4

21 **SFP** < **SEMPRE**

25

29 **C**

31 **D** 2 **E** 6

39

"THINK" - 1ST TENOR - 2

43



47

**F**



51

4

55

**G**



59

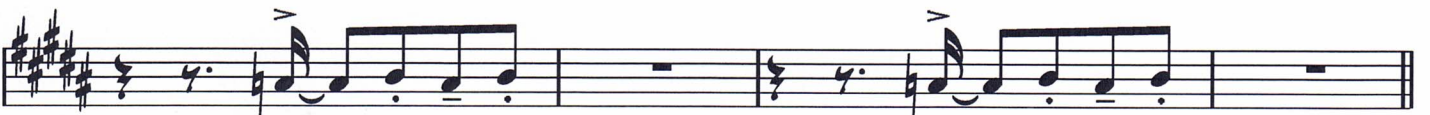
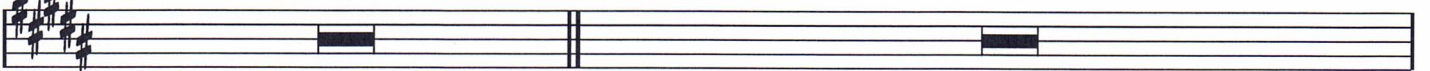
**H**

2

61

**I**

4



69

**J**

73

4



77

**K**

4x



81

UNIS.



# THINK

BY ARETHA FRANKLIN & TED WHITE

ARR.: STEWART BURGESS

2ND TENOR

1  $\text{♩} = 120$

**A** 4

5

*mf*

9 **B** 4 13 4

*sf* **SEMPRE**

21

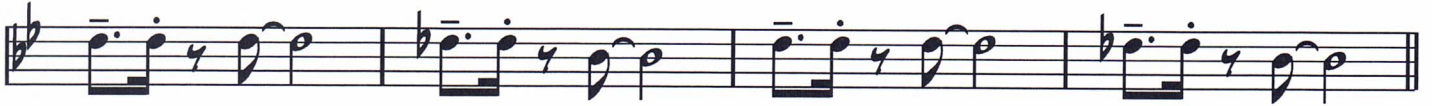
25 **C**

29 **D** 2 31 **E** 6

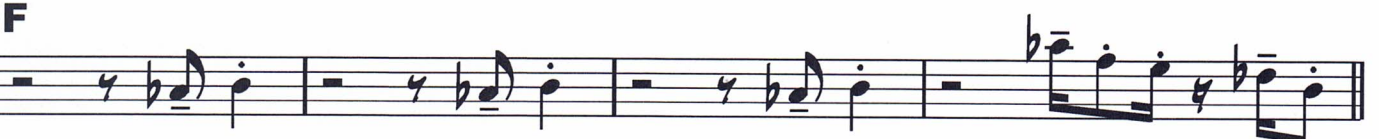
39

"THINK" - 2ND TENOR - 2

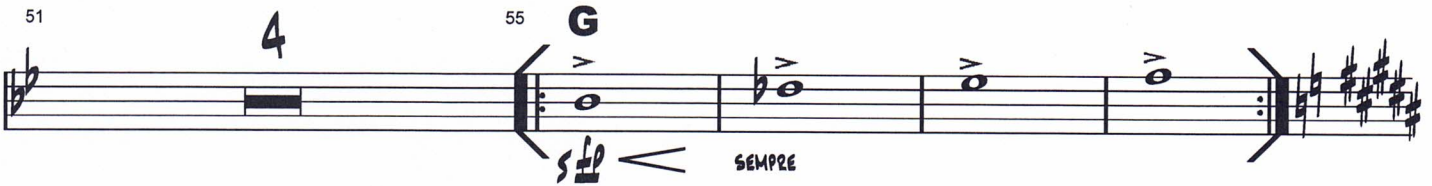
43



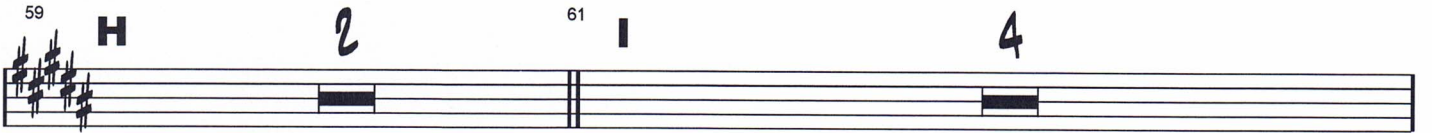
47



51



59



61



69



73



81





# THINK

BY ARETHA FRANKLIN & TED WHITE

ARR.: STEWART BURGESS

BARITONE

1  $\text{♩} = 120$

**A** 4

5

*mf*

9

**B**

13

4

*sf* **SEMPRE**

21

25

**C**

29

**D** 31 **E** 4

39

3 43

"THINK" - BARITONE - 2

47 **F**

51

55 **G**

59 **H** 61 **I** 4

69 **J**

73

77 **K** 4x

81 UNIS.